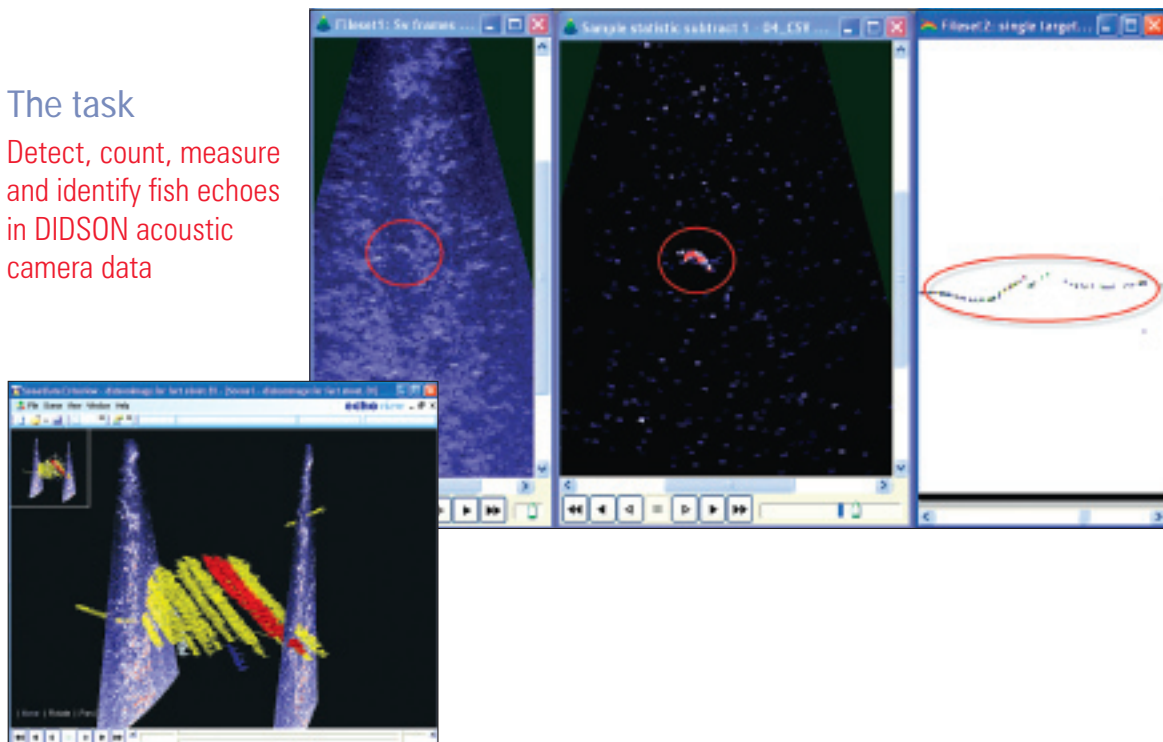


The task

Detect, count, measure and identify fish echoes in DIDSON acoustic camera data



The solution

Echoview sonar modules provide powerful and advanced analysis of data from DIDSON acoustic cameras for detection and analysis of fish in rivers, lake and marine environments. Advanced and flexible signal processing tools allow fish objects to be extracted from background noise. Advanced fish detection uses full beam data; simple beam-crossing techniques available. Fully synchronize simultaneous data from DIDSON and split beam echosounders for visualization and analysis. Exploit the opportunity to influence the design and content of evolving Echoview functionality for DIDSON and similar instruments.

The benefits

1 Visualize all data and the results of analysis steps

- See what you are doing and check data quality at every step of analysis
- Tune and optimize your signal processing by viewing virtual echograms that update automatically as algorithm settings change
- Synchronize DIDSON and single/split beam data
- Replay segments of DIDSON data based on regions in single beam echograms.
- Automatically select only those sections of DIDSON data where there are fish

2 Detect and track fish in 2D and 3D

- Create a singlebeam echogram from any beam and detect and track single targets using conventional singlebeam algorithms
- Detect and track targets using data from all beams in a ping
- Optimize tracking algorithms for local conditions
- Manually create, split, merge and edit fish tracks if necessary

3 Extract a rich set of data outputs

- Export single target detections and fish tracks
- Export morphological parameters of detected targets for classification

4 Belong to a community of users

- Echoview is the most widely used fisheries acoustic analysis software in the world
- You get the benefit of other peoples ideas and enhancements
- You get to influence new features of the software as the science and analysis techniques advance.

5 Select tools according to need and budget

- Stationary sonar module for fixed installations and basic tracking
- 2D sonar module for fixed and mobile applications and advanced tracking
- 3D sonar module for all 2D tools plus 3D school detection and analysis

